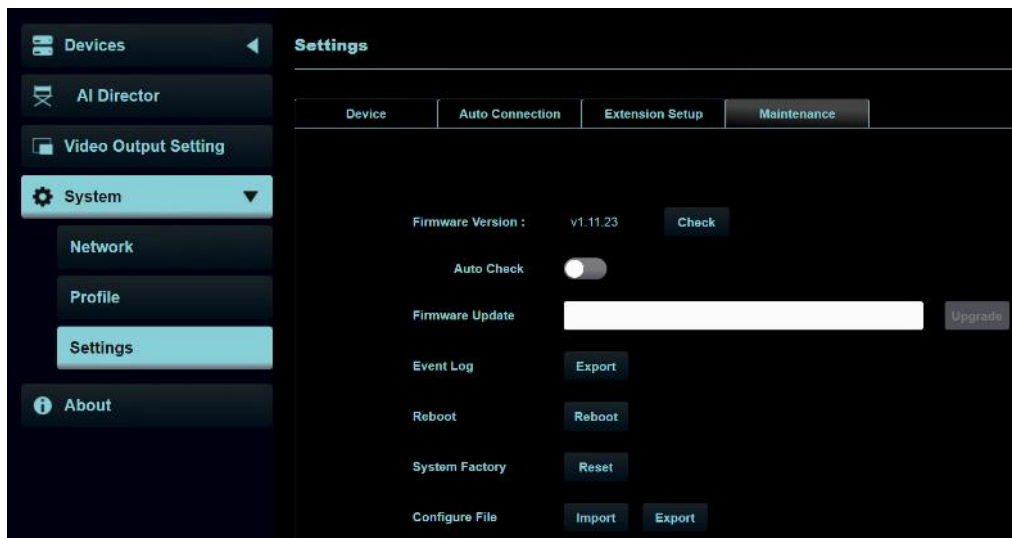


FW047 - Camconnect Pro(AI-Box1) Firmware Update Manual

Read me first!!

After performing a Factory Reset, all previously configured parameters will be restored to their default settings.

Therefore, please make sure to export the Profile before performing the Factory Reset. After the factory reset is completed, import the Profile to restore the original settings.



There are two methods to upgrade the FW, please find the instruction from following chapters.




■FW Upgrade by OTA

■FW Upgrade by Webpage

※ “Browser update **MUST** unplug/plug power supply” while “internet update, **NO NEED** to unplug/plug power supply”.

FW Upgrade by OTA

1. Tools

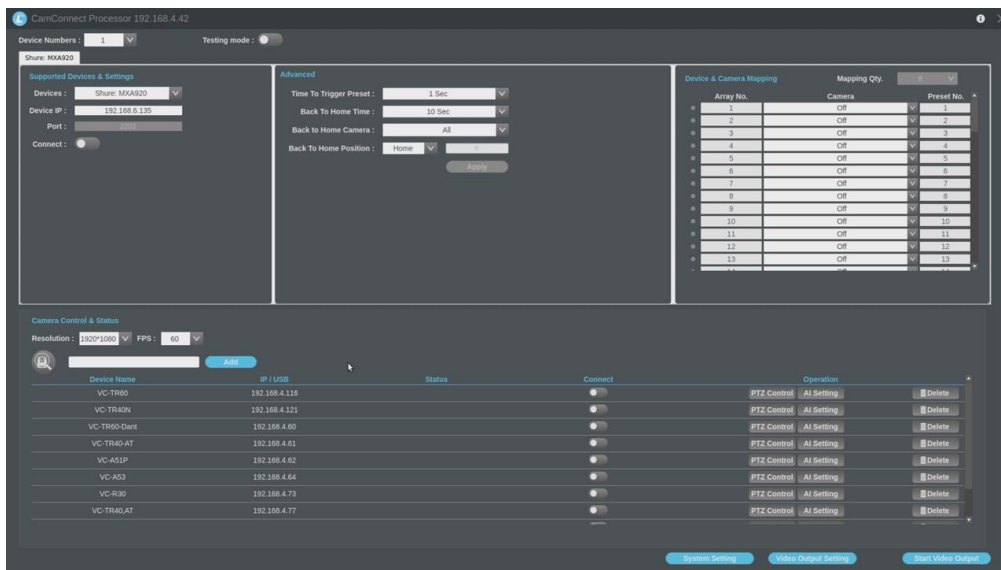
Power adapter / Power Cord	HDMI cable Ethernet Cable	Monitor
		

2. FW Update - Video

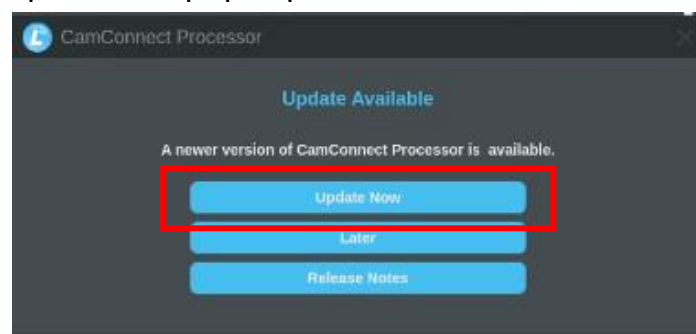
1.1 Connect the AI-BOX1 with Power, Monitor and Ethernet.



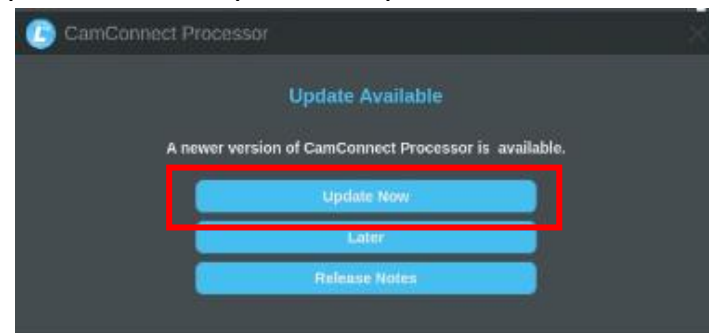
1.2 Please find the following screen.



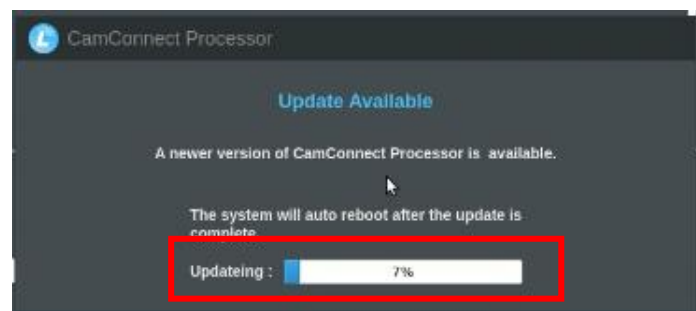
1.3 The Firmware update will pop up in seconds.



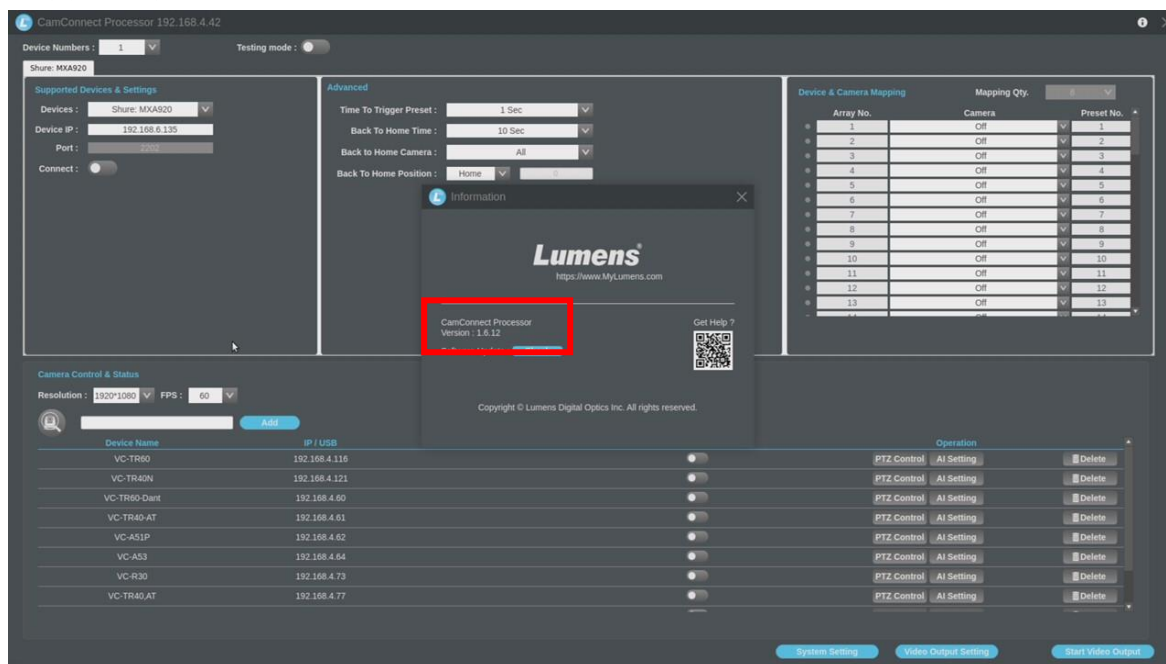
1.4 Please Click [Update Now] to proceed update.



1.5 FW Update will start automatically. (Around 6 minutes taken)











1.6 When FW Update finish, Camconnect Pro will restart and you can check version on upper right corner.



FW Upgrade by Webpage

1 Device and Tool Preparation

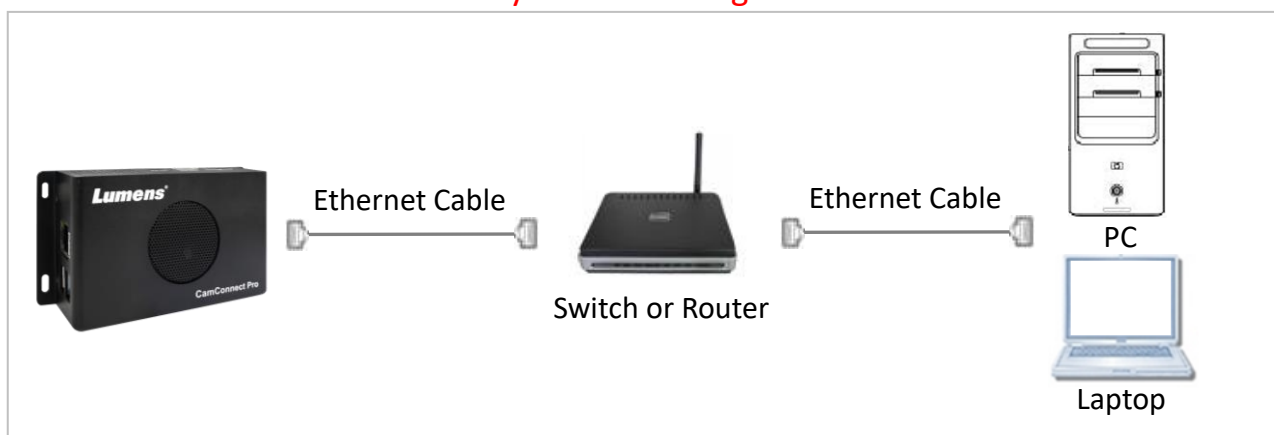
1.1 Please prepare following devices and tools before FW upgrade.

AI-Box1	PC or Laptop	Monitor
	 or 	
Power adapter and power cord	Ethernet cable and HDMI cable	Switch or Router
	 	

2 Connections

2.1 Connecting via switch or router.

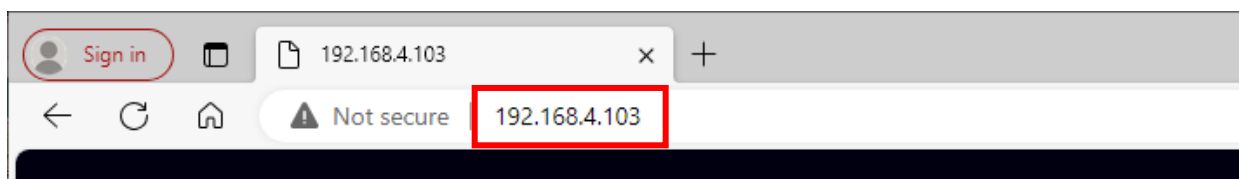
❌ Make sure the IP address range are the same and if possible avoid multiple opened network interface card on PC you are sending FW from.



3 FW Update

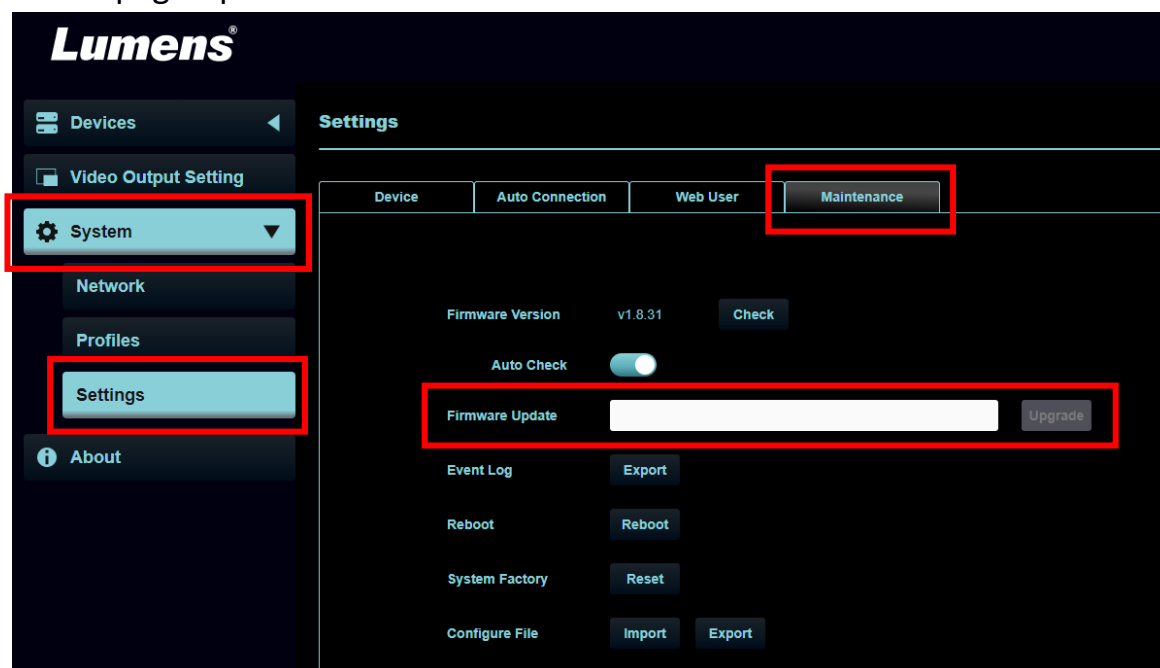
3.1 Open browser and enter the IP address of AI-Box1 in the address bar.

- You can check the IP address from the [Operation Interface].

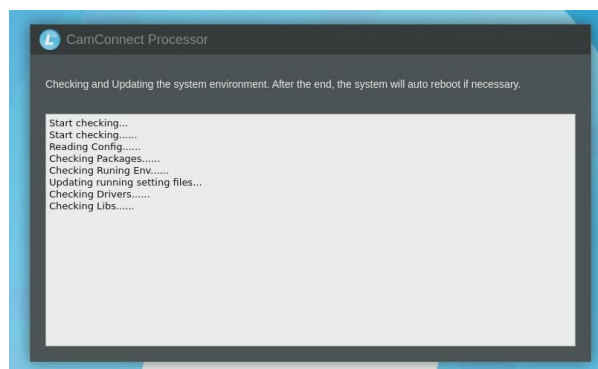
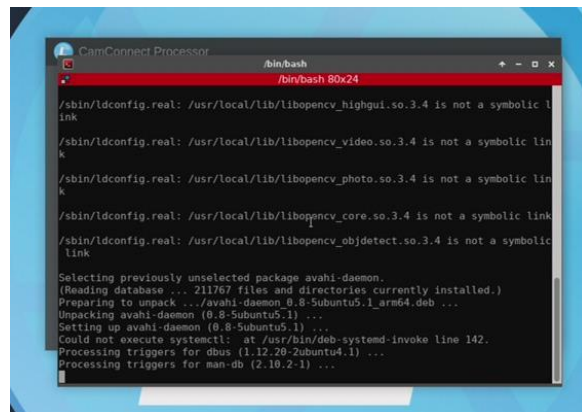
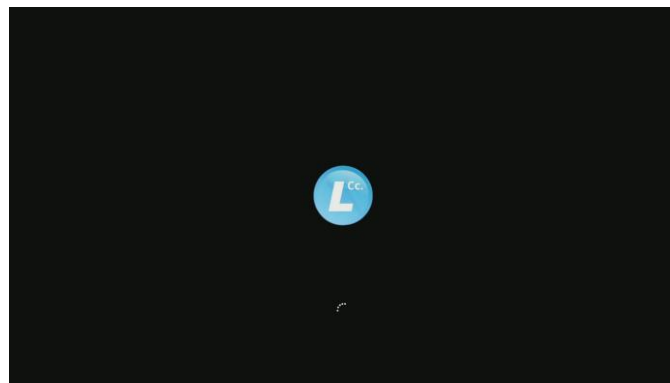
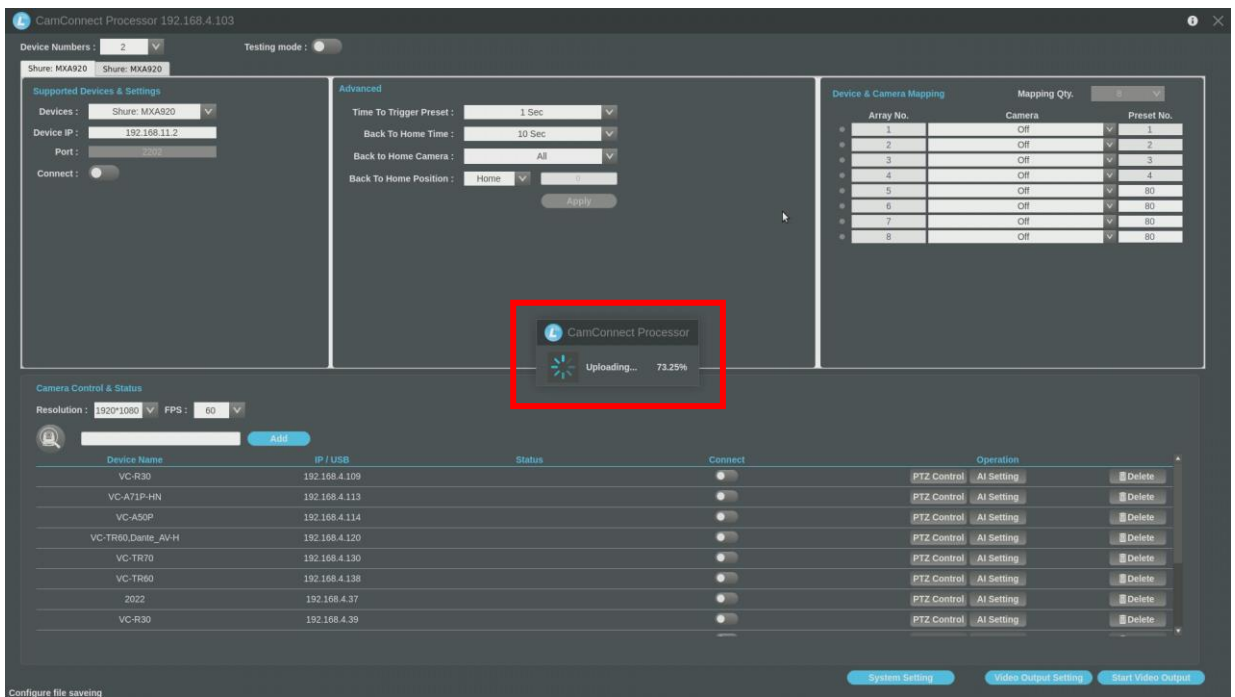


3.2 Select [System]> [Setting]> [Maintenance]> [Firmware Update] to select firmware file and start updating.

- Webpage Update function is available after FW version v1.5.6.

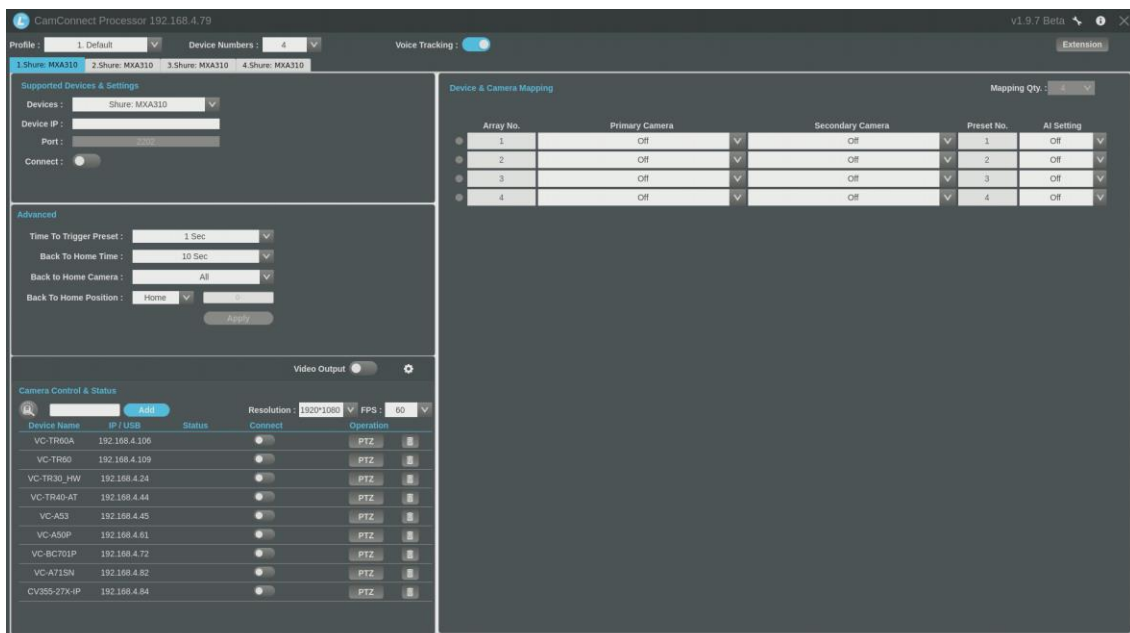
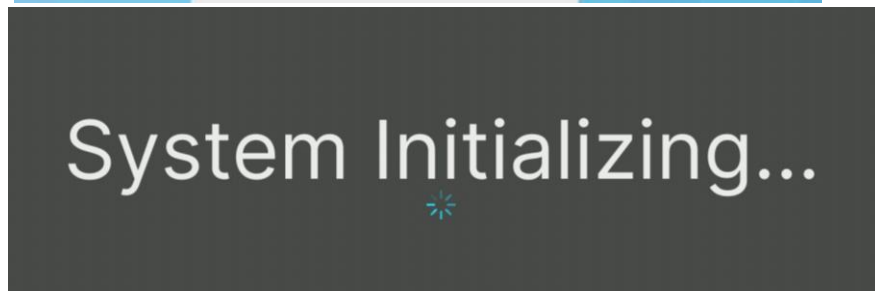
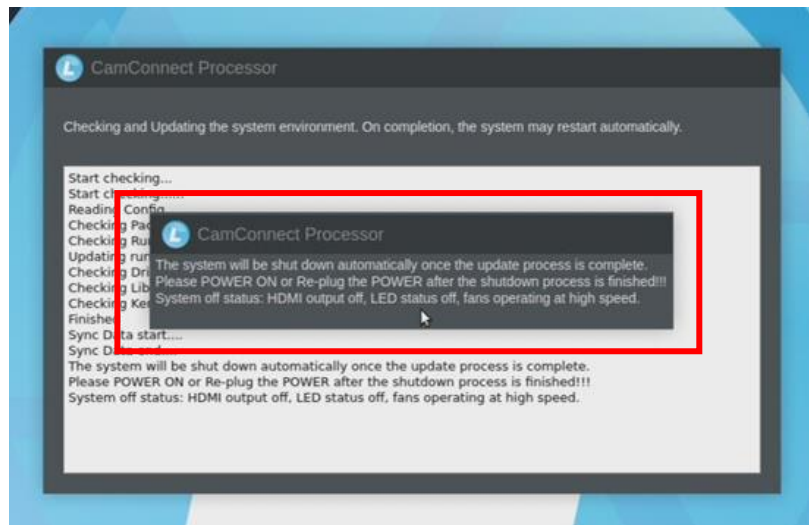


3.3 FW download starts(around 5-10 minutes taken), please check the status from HDMI output or webpage, don't unplug the cables and refresh the browser.



3.4 After FW update process is complete, the system will be shut down automatically, please **power on** or **re-plug the power adapter** when the HDMI output off and the fan is running at a high speed.

***Note:** This message will show around 1-2 minutes, please DO NOT unplug the cables until hearing the fan at a high speed.



3.5 Please enter the IP address, login webpage again and check the FW version from [About]> [Version].

